



# Smoke detector 300 VALUE

Congratulations with your new smoke detector. This instruction manual explains the product and we advise you to read this carefully so that proper use is ensured. The instruction manual should be kept as long as the smoke detector is in use.

## CONTENTS:

- Smoke detector with fastening bracket
- Battery
- Fittings
- Manual instruction Danish, English and Russian

## GENERAL:

- The smoke detector is a stand-alone-alarm and is designed to provide early warning of the presence of fire by emitting a sound signal.
- Its 85dB sound alarm is powerful enough to wake you up in case of an emergency.
- It ensures you'll gain precious minutes to escape before the fire's propagation.
- It detects smoke from wood, cotton, plastic and hydrocarbon based fires.
- However, this device is effective only when located, installed and maintained in compliance with the instructions described in this manual.
- This Device does not detect gas, heat or flames.
- Carefully read all the instructions before installing and using the device.

- Follow the following safety instructions and prescriptions:

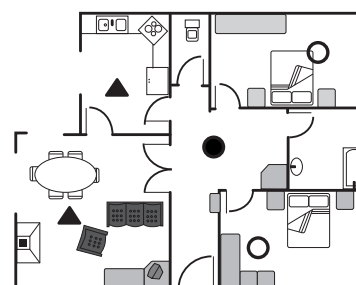
**!!! Do not modify the device - Never repair the device yourself - Return it to your dealer for any repairs !!!**

The alarm volume power is 85 dB, repeated exposure to such a sound intensity may damage hearing.

## WHERE TO MOUNT THE SMOKE DETECTOR:

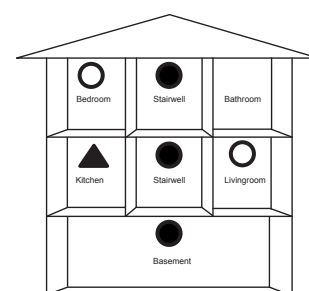
- Install at least one smoke detector per dwelling per floor.
- Install a smoke detector at the entrance of each bedroom at least 1 meter minimum for the wall.
- Install a smoke detector in the circulation corridor. If the latter exceeds 12 m long, install a smoke detector at each end.
- Ensure no door or other obstacle prevents the flow of smoke from reaching the detector.
- Install the smoke detector more than 6 m away from materials generating combustion particles (kitchen, chimney, wood burner, etc.) or replace with heat alarm. Ensure no door or other obstacle prevents the flow of smoke from reaching the detector.
- Install the smoke detector more than 1,5m away from fluorescent and neon lamps.
- Install the smoke detector more than 3 m away from the bathroom.
- Install the smoke detector in temperate zones (operating temperature between 0 and 40°C
- Keep it away from any object likely to prevent free air flowing.
- Place it at least 30 cm away from luminaries or decorative objects likely to obstruct smoke entering the smoke detector.
- Install the smoke detector in temperate zones (operating temperature between 0 and 40°C

Single-storey-house

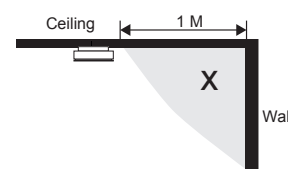


- Minimum protection - smoke alarm
- Optimal protection - smoke alarm
- ▲ Optimal protection - heat alarm

Multi-storey house



- Minimum protection - smoke alarm
- Optimal protection - smoke alarm
- ▲ Optimal protection - heat alarm



## LOCATIONS TO BE AVOIDED:

- Garage: as exhaust gases may activate it.
- Dusty or dirty areas.
- Near draughts, A/C devices, radiators or fans.
- In areas invaded by insects
- In areas where the temperature may be  $> 40^{\circ}\text{C}$  or  $< 0^{\circ}\text{C}$  (garage, attics)
- Humid rooms such as the bathroom or kitchen where relative humidity may exceed 90%.

## INSTALLING THE SMOKE ALARM

This smoke alarm is powered by a battery and requires no additional wiring.

- Having established the mounting location ensure that there is no electrical wiring or pipe work in the area adjacent to the mounting surface.
- Draw a 100mm horizontal line where you wish to install the alarm.
- Align the fastening bracket on the two screw holes along the line.
- Draw a mark in each hole to mark the location of the drilled holes.

Item no: 27310/10101  
DB no.: 1604070/2053458  
Barcode: 5703901017119/5703901019588

L-Team ApS  
Industrivej 20  
5492 Vissenbjerg



- During drilling, move the detector away to prevent dust from penetrating.
- Insert wall plugs into the drilled holes.
- Screw the 2 screws supplied to fasten the bracket.
- Insert the battery into the battery compartment while ensuring the polarities are correct. The red LED flashes once.

**Caution!** The smoke detector cannot be fastened if the battery is not installed properly.

- Align the tabs on the fastening bracket with the detector and clip it into the bracket.
- Turn the detector clockwise to fit it in place.
- Press the test button to check if the detector is correctly working

### OPERATING YOUR SMOKE ALARM

Once the smoke alarm has been installed a small red indicator light (LED), positioned under the test button, should flash about every 43 seconds in normal operation.

If smoke is detected the unit will emit beeps pulsating alarm with red LED flash until the air is clear.

Our advice: Test your alarm once a week

Never use a flame to test the smoke detector as this may start a fire. The test button ensures accurate checking of the alarm's operation, as required by certification laboratories.

### TESTING YOUR SMOKE ALARM

It is recommended that you test your smoke alarm once a week to ensure the detector is working correctly.

- To check proper battery charging, press the test button, the red LED flashes and the alarm is activated by emitting 3 beeps, then stops. If the alarm is not activated, refer to the Maintenance and Guarantee paragraphs.
- Never use a flame to test the smoke detector as this may start a fire. The test button ensures accurate checking of the alarm's operation, as required by certification laboratories.

After installation and after re occupation of the dwelling following a vacation etc, check all your alarms.

### LOW BATTERY WARNING

When the battery is at the end of its life, the smoke detector will emit a short fast 'beep' app. every 60 seconds. This low voltage warning will be given for at least 30 days.

### MAINTAINING YOUR SMOKE ALARM

Clean your smoke alarm regularly to prevent dust build up. This can be done using a vacuum cleaner with the brush attachment. Clean gently around the front grilled section and sides. Never use water, cleaners or solvents since they may damage the smoke alarm.

### CONFORMITIES:



1134-CPR-101

EN 14604:2005/AC:2008

KD-133A

LPS no. 20141

Smoke alarm devices

DoP no. KD133A-CPR-001

Find the complete DoP (Declaration of Performance) at [www.ensonordic.com](http://www.ensonordic.com).

Declared performance:

Essential characteristics	Performance	Harmonized technical specification
		EN 14604:2005/AC:2008
Nominal activation conditions/ Sensitivity, Response delay (response time) and Performance under fire condition	PASS	4.12, 4.18, 5.2, 5.3, 5.4, 5.5, 5.6, 5.15, 5.17, 5.18, 5.19, 5.20
Operational reliability	PASS	4.1, 4.2, 4.3, 4.4, 4.5, 4.6, 4.7, 4.8, 4.9, 4.10, 4.11, 4.13, 4.14, 4.15, 4.16, 4.17, 4.19, 5.11, 5.16, 5.22, 5.23, 5.24
Tolerance to supply voltage	PASS	5.21
Durability of operational reliability and response delay, Temperature resistance	PASS	5.7, 5.8
Durability of operational reliability, vibration resistance	PASS	5.12, 5.13
Durability of operational reliability, humidity resistance	PASS	5.9
Durability of operational reliability, corrosion resistance	PASS	5.10
Durability of operational reliability, electrical stability	PASS	5.14

Notes: The products covered by this standard are assumed to operate, in an event of fire, before the fire becomes so large as to affect their functioning. There is therefore no requirement to function when exposed to direct attack from fire.

### RECYCLING:

Do not discard the unit with household waste, but in compliance with currently enforced regulations. In compliance with the Directive 2002/96/CE relative to waste from electrical and electronic equipment (WEEE) this product must be recycled.



### TECHNICAL DATA :

Type of assembly:	Ceiling - for ordinary household
Battery:	9V - (1 pcs. included) recommended types: Pairdeer 9V 6F22, GP 1604S, Pairdeer 9V 6LR61, GP 1604A, Mustang 9V 6LR61, EVE CR-9V/P, Franso ER9V
Battery life:	Up to 1 year - regular use
Power consumption:	6-10mA (standby)
Operating temperature:	0°C – 40°C
Ambient humidity:	10% - 90%
Sound power:	85dB / 3 meter
Guarantee:	2 years - NO battery-guarantee

The smoke alarm should be replaced at least every 8 year

\* The smoke detector are guaranteed for a period of two years (except from battery) from the date of purchase. For conditions of guarantee refer to ensonordic general terms and conditions: [www.ensonordic.com](http://www.ensonordic.com).

01.07.2019

Item no: 27310/10101  
DB no.: 1604070/2053458  
Barcode: 5703901017119/5703901019588

L-Team ApS  
Industrivej 20  
5492 Vissenbjerg