



2 ÅRS
GARANTI



Røgalarm 3000 - HIGH FREQUENCY

Tillykke med dit nye produkt. I denne brugsanvisning beskrives produktet, og vi anbefaler Dem at læse denne grundigt igennem, så korrekt anvendelse sikres. Brugsanvisningen bør opbevares så længe produktet er i brug.

PAKKEN INDEHOLDER:

- Røgalarm
- Base (sender og modtager frekvens 868,4MHz)
- Batteri
- Fittings
- Brugsanvisning på dansk og engelsk

FUNKTION:

Røgalarm 3000 High Frequency er en trådløs optisk røgalarm, som sender på en ny frekvens uden forstyrrelser og dermed større sikkerhed. Alarmen udløses ved at den indbyggede sensor "opdager" røgen. Røgalarmen reagerer ikke på gas, varme eller flammer. Røgalarmen er til trådløs sammenkobling af op til i alt 20 røgalarmer. Røgalarmen kan desuden sammenkobles med 230V trådløs røgalarmer. I samme system kan anvendes modellerne: 27480, 10102, 10103, 18101 og 18103. Når én af systemets røgalarmer aktiveres sendes trådløst signal til alle øvrige alarmer i systemet og disse aktiveres efterfølgende. Røgalarmen har indbygget pausefunktion, som kan aktiveres ved for eksempel madlavning og dermed hindre utilsigtet alarm.

PLACERING AF RØGALARMEN- HVILKE RUM?

I 1-plans beboelse bør der som minimum placeres 1 røgalarm et sted mellem soveværelse og opholdsrum, således at alarmen kan høres fra begge rum. For optimal sikkerhed placeres en røgalarm i hvert rum med undtagelse af køkken, badeværelse og garage, da mados, damp og udstødning kan udløse røgalarmen. Se fig. 1 & 2

Fig. 1
1-planshus

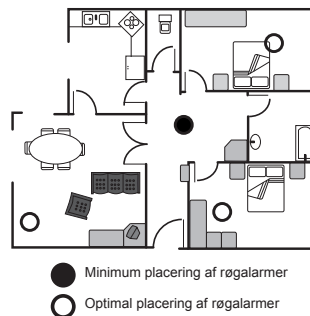
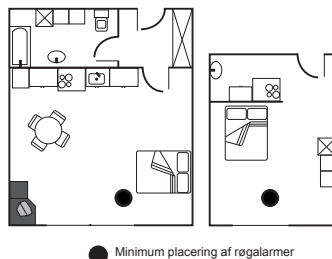
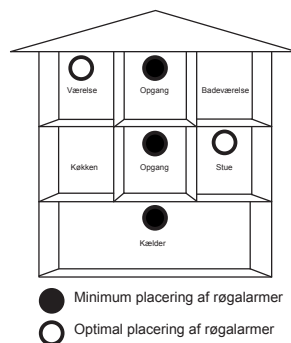


Fig. 2
Lejlighed



I 2 eller flere plans beboelse bør der som minimum placeres en røgalarm på hver etage i trappeopgangen. For optimal sikkerhed placeres røgalarmer i alle rum med undtagelse af køkken, badeværelse og garage, da mados, damp og udstødning kan udløse røgalarmen. Se fig. 3

Fig. 3
Flereplans hus



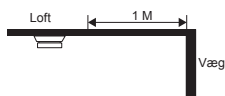
Varenr.: 27480
DB nr.: 1886972
EAN: 5703901017874

L-Team ApS
Industrivej 20
5492 Vissenbjerg
Danmark

PLACERING AF RØGALARMEN - HVOR?

Da varm røg automatisk søger opad anbefales det, for optimal funktion, at montere røgalarmen centralt i loftet og mindst 30 cm fra dekorationsmaterialer og belysning. Undgå områder hvor der ikke er fri luftcirkulation f.eks. hjørner. Se fig. 4.

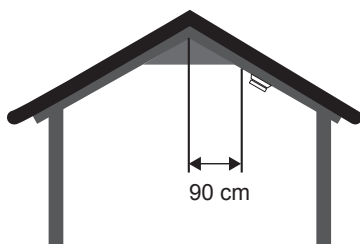
Fig. 4



Monteres alarmen på skrå lofter eller "kip-lofter" anbefales det at montere alarmen ca. 90 cm nede, målt horisontalt, da området herover er "død-luft" og kan forhindre røgen i at komme frem til alarmen. Se fig. 5

Fig. 5

Montering på skråvæg / kip



UNDGÅ AT PLACERE RØGALARMEN FØLGENDE STEDER:

- Steder hvor temperaturen falder til under 0°C eller stiger til over 40°C.
- Vådtrum, som badeværelser, køkkener hvor luftfugtigheden kan overstige 90%
- Nær dekorationsmaterialer, døre, belysning eller vinduer, som kan hindre røgen i at komme frem til alarmen
- Minimum 30 cm fra lysarmaturer da disse kan udsende elektrisk støj.
- Støv og røgfylde rum som garager. Udstødning kan udløse alarmen.
- Tæt på eller direkte over radiatorer eller ventilationssystemer, som kan have indflydelse på luftens retning
- Undgå meget støvfylde værksteder.

SPECIFIKATION - RØGALARM:

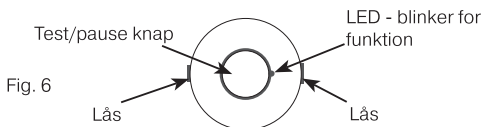


Fig. 6

SPECIFIKATION - BASEN:

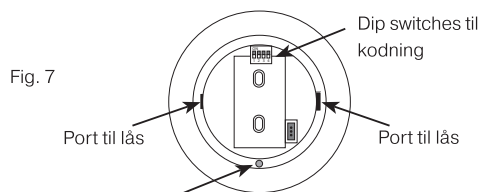


Fig. 7

Anvendes IKKE - kun til brug i forbindelse med fremstilling af alarmen.

MONTERING AF RØGALARMEN - BASEN:

- Find den ønskede placering
- Brug beslaget (basen) til afmærkning af de 2 huller for montering
- Bor 2 huller i loftet for montering
- Isæt de 2 medfølgende rawplugs og hold beslaget (basen) mod overfladen.
- Isæt og fastgør de medfølgende skruer indtil beslaget (basen) er korrekt fastgjort.
- Hver base i systemet skal kodes individuelt med samme kode. Kodningen hindrer sammenfald med andet trådløst udstyr. Se afsnittet „kodning“

Fig. 8

Dip switches til kodning
Kan reguleres op og ned



KODNING:

På basens inderside ses 4 „dip switches“ som anvendes til kodning - se fig. 7 og 8. Disse kan reguleres op og ned og dermed give ialt 16 forskellige koder:

For eksempel:



Bemærk - ALLE baser i systemet skal kodes med SAMME kode !



MONTERING AF RØGALARMEN I BASEN:

Efter kodning af basen monteres røgalarmer i basen

- Isæt 1 stk. 9v batteri - vær opmærksom på + & - pol.
- Klem forsigtigt de 2 „låse“ på røgalarmens sider ind og lad røgalarmer glide på plads i basen. Bemærk - røgalarmer kan ikke monteres i basen uden batteri.
- Test røgalarmer før ibrugtagning - se afsnittet „test“

BRUG AF RØGALARMEN:

Røgalarmer og basen virker når batteriet er monteret og røgalarmer er monteret i basen.

Normal mode:

En lille rød LED vil blinke ca. 1 gang pr. minut som indikation på at batteriet er ok og at alarmer fungerer optimalt.

Ved alarm:

Alarmer vil afgive høj pulserende signal og den røde LED blinker hurtigt indtil luften igen er klar.

Alarmer har indbygget "sleep mode" hvilket bevirker at alarmerens modtagefunktion er passiv i ca. 16 sek. hvorefter den kan aktiveres i en kort periode. Herefter går alarmer atter på "sleep mode". Ved at trykke på alarmerens testknap aktiveres alarmer omgående og der sendes signal til alle øvrige røgalarmer i systemet som også aktiveres. Røgalarmerne alarmerer så længe testknapen aktiveres.

PAUSEFUNKTION:

Røgalarmer har indbygget pausefunktion som kan være nyttig ved fx. madlavning. Når pausefunktionen skal aktiveres trykkes og holdes test / pauseknapen - se fig. 6 - nede i ca. 3 sekunder. Røgalarmerens følsomhed reduceres i ca. 10 minutter. Den røde LED vil blinke hvert 10. sekund. Efter ca. 10 minutter vil alarmer automatisk vende tilbage til normal følsomhed. Hvis røgalarmer udsættes for kraftigt røg i mens den er i pausemode, vil pausefunktionen automatisk deaktivere.

Bemærk - Funktionen kan kun aktiveres hvis alarmer aktiveres på grund af mados eller damp!

TEST:

Det anbefales at teste røgalarmer 1 gang om ugen, og altid efter bortrejse. Tjek jævnligt at den røde LED lampe blinker. Tryk på testknapen i ca. 3 sek. indtil alarmer

aktiveres. Alarmer vil signalere og LED lampen vil blinke. Test af sammenkoblingen: Tryk og hold testknapen nede i op til 20 sekunder indtil de øvrige røgalarmer alarmerer.

LAVT BATTERI / BATTERISKIFT:

Alarmer har indbygget "lavt batteri" signal. Der afgives et kort "bip" ca. 1 gang pr. minut i ca. 30 dage, når batteriet skal udskiftes.

Når en af de sammenkoblede røgalarmer har "lavt batteri" vil de øvrige røgalarmer i systemet afgive en kort hyletone én gang i timen, så længe røgalarmer med "lavt batteri" signalerer for lavt batteri.

Husk at teste røgalarmer efter batteriskift.

VEDLIGEHOLDELSE:

Alarmer bør rengøres minimum 2 gange om året for at forhindre støv kommer ind i alarmer og forårsager fejlalarm. Alarmer bør støvsuges med en blød børste og aftørres med en klud. Må ikke overmales. Test røgalarmer efter rengøring.

GODKENDELSE:



0086-CPR-638573

EN 14604:2005/AC:2008

BS - R&TTE - LICENSE NO KM 638574

DoP no. L-TEAM-MTS-166RF-0086-CPR-638573

MTS-166RF

LPS no: 20161

SMOKE ALARM DEVICES

Se komplet DoP (ydeevnedeklaration) på www.ensonordic.com

Declared performance: (Se næste side)

Varenr.: 27480
DB nr.: 1886972
EAN: 5703901017874

L-Team ApS
Industrivej 20
5492 Vissenbjerg
Danmark



Essential characteristics	Performance	Harmonized technical specification
		EN 14604:2005/AC:2008
Nominal activation conditions/ Sensitivity, Response delay (response time) and Performance under fire condition	PASS	4.12, 4.18, 5.2, 5.3, 5.4, 5.5, 5.6, 5.15, 5.17, 5.18, 5.19, 5.20
Operational reliability	PASS	4.1, 4.2, 4.3, 4.4, 4.5, 4.6, 4.7, 4.8, 4.9, 4.10, 4.11, 4.13, 4.14, 4.15, 4.16, 4.17, 4.19, 5.11, 5.16, 5.22, 5.23, 5.24
Tolerance to supply voltage	PASS	5.21
Durability of operational reliability and response delay, Temperature resistance	PASS	5.7, 5.8
Durability of operational reliability, vibration resistance	PASS	5.12, 5.13
Durability of operational reliability, humidity resistance	PASS	5.9
Durability of operational reliability, corrosion resistance	PASS	5.10
Durability of operational reliability, electrical stability	PASS	5.14

Notes: The products covered by this standard are assumed to operate, in an event of fire, before the fire becomes so large as to affect their functioning. There is therefore no requirement to function when exposed to direct attack from fire.

BORTSKAFFELSE:

Elektrisk og elektronisk udstyr indeholder materialer, komponenter og stoffer, der kan være skadelige for menneskers sundhed og for miljøet, hvis affaldet ikke håndteres korrekt.

Elektrisk og elektronisk udstyr er mærket med nedenstående overkrydsede skraldespand.



Den symboliserer, at elektrisk og elektronisk udstyr ikke må bortskaffes sammen med usorteret husholdningsaffald, men skal indsamles særskilt. Kontakt den lokale genbrugsstation og følg deres anvisninger.

TEKNISKE SPECIFIKATIONER :

Røgalarm til:	Privat beboelse
Montering:	I loft
Batteri:	9v Alkaline (duracell MN1604, Energizer 522, Gold Peak GP1604A anbefales) 9v Lithium (ultralife U9VL-J, Gold Peak CR-V9, EVE CR9V/P)
Levetid batteri:	Op til 1 år ved normalt brug
Frekvens:	868,4MHz
Rækkevidde:	Op til 100 meter

Transmission:	50 Kbps
Antal enheder pr. system:	20 *
Antal koder:	16 muligheder
Omgivelses-temperatur:	0°C – 40°C
Luffugtighed:	10% - 90%
Lydstyrke:	85dB ved 3 meter
Strømforsbrug:	< 20uA (standby) < 50mA (ved alarm)
Garanti:	2 år - dog ikke på batteri

* Der kan sammenkobles både 9V og 230V trådløse røg-alarmer. I samme system kan anvendes modeller med varenr.: 27480, 10102, 10103, 18101 og 18103.

Garanti:

Der ydes 2 års garanti på produktet regnet fra købsdatoen. Garantien er kun gyldig mod forevisning af original købskvittering.

Garanti dækker reparation af produktet i garantiperioden forudsat at produktet er anvendt og vedligeholdt som beskrevet i manualen. Alle erstattede dele tilfalder L-Team. Udskiftning og reparation forlænger ikke garantiperioden. Garantien bortfalder ved modificering eller forsøg på reparation af produktet. Garantien dækker ikke fragtomkostninger og force majeure som f.eks. utilsigtet strømafbrydelse.

Ensonordic er udviklet af L-Team der har mere end 25 års erfaring med el-produkter til det danske og nordiske marked. Serien omfatter bl.a. røgalarmer, dørlukker, sensorer, varmeblæsere til gør-det-selv markedet samt kabeltromler, kabelsæt, stik og forlængerled, CEE stik, byggestrømstavler mm til det professionelle marked.

Se mere på www.ensonordic.com 01.12.2019

Varenr.: 27480
DB nr.: 1886972
EAN: 5703901017874

L-Team ApS
Industrivej 20
5492 Vissenbjerg
Danmark



Smoke detector 3000 - HIGH FREQUENCY

Congratulations with your new smoke detector. This instruction manual explains the product and we advise you to read this carefully so that proper use is ensured. The instruction manual should be kept as long as the smoke detector is in use.

CONTENTS:

- Smoke detector
- Base (transmitter/receiver)
- Battery
- Fittings
- Manual instruction

GENERAL:

- This smoke alarm is a photoelectric alarm with build-in wireless interconnection. It can transmit and receive with other smoke alarms and is designed to provide early warning of the presence of fire by emitting a sound signal.
- Its 85dB sound alarm is powerful enough to wake you up in case of an emergency.
- It ensures you'll gain precious minutes to escape before the fire's propagation.
- It detects smoke from wood, cotton, plastic and hydrocarbon based fires.
- However, this device is effective only when located, installed and maintained in compliance with the instructions described in this manual.
- This device does not detect gas, heat or flames.
- Carefully read all the instructions before installing and using the device.
- Follow the following safety instructions and prescriptions:
 - Do not modify the device.
 - Never repair the device yourself.
 - Return it to your dealer for any repairs.

The alarm's power is 85 dB, repeated exposure to such a sound intensity may damage hearing.

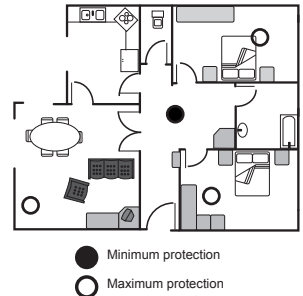
WHERE TO MOUNT THE SMOKE DETECTOR:

- Install at least one smoke detector per dwelling per floor.
- Install a smoke detector at the entrance of each bedroom at least 1 meter minimum for the wall.
- Install a smoke detector in the circulation corridor. If the latter exceeds 12 meter long, install a smoke detector at

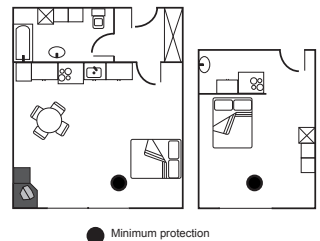
each end.

- Ensure no door or other obstacle prevents the flow of smoke from reaching the detector.
- Install the smoke detector more than 6 meter away from materials generating combustion particles (kitchen, chimney, wood burner, etc.).
- Install the smoke detector more than 0,3 meter away from fluorescent and neon lamps.
- Install the smoke detector more than 3 meter away from the bathroom.
- Install the smoke detector in temperate zones (operating temperature between 0 and 40°C.
- Keep it away from any object likely to prevent free air flowing.
- Place it at least 30 cm away from luminaries or decorative objects likely to obstruct smoke entering the smoke detector.

Single-storey house



Flat or Studio



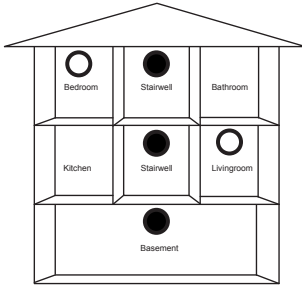
Item no.:
Barcode:

27480
5703901017874

L-Team ApS
Industrivej 20
5492 Vissenbjerg
Danmark

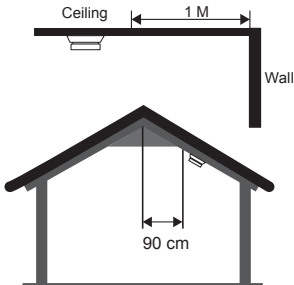


Multi-storey house



- Minimum protection
- Maximum protection

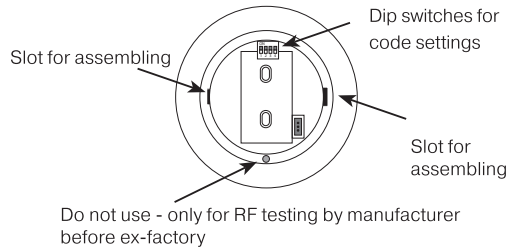
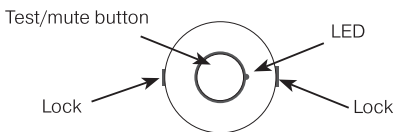
MOUNTING THE SMOKE DETECTOR ON CEILING OR SLOPED CEILING:



LOCATIONS TO BE AVOIDED:

- Garage: as exhaust gases may activate it.
- Dusty or dirty areas.
- Near draughts, A/C devices, radiators or fans.
- In areas invaded by insects
- In areas where the temperature may be $> 40^{\circ}\text{C}$ or $< 0^{\circ}\text{C}$ (garage, attics)
- Humid rooms such as the bathroom or kitchen where relative humidity may exceed 90%.

YOUR SMOKE DETECTOR:



INSTALLING THE SMOKE ALARM

This smoke alarm is powered by a battery and requires no additional wiring.

- Having established the mounting location ensures that there is no electrical wiring or pipe work in the area adjacent to the mounting surface.
- Take the mounting bracket and mark the two mounting hole locations.
- Drill holes in the positions marked.
- Insert wall plugs into the drilled holes.
- Screw mounting base to mounting surface. Apply the included screws into the two holes and secure the base firmly. **DO NOT OVER TIGHTEN.**
- Each unit carries a four positions dip switch (see diagram) for coding the transmit and receive frequency to prevent interference with any other RF equipment. There are 16 combinations.

IMPORTANT!

The setting of the dip switch must be the same on all interconnected units.

Examples of code settings:



- Insert the battery in the battery compartment located in the upper smoke alarm unit. This can be accessed by separating the unit apart, simply push-in the clips on both sides of the unit simultaneously.

NOTE – For the safety of the end user the smoke alarm cannot be fitted without its battery.

Item no.: 27480
Barcode: 5703901017874

L-Team ApS
Industrivej 20
5492 Vissenbjerg
Danmark



- Attach the upper smoke alarm unit firmly.
- Test the alarm for correct operation using test facility, once the alarm is integrated and installed.

Caution! The detector cannot be fastened if the battery is not installed properly. Batteries may explode when connected improperly.

OPERATING YOUR SMOKE ALARM

Once the smoke alarm has been installed a small indicator light (LED), positioned beside the test button, and should flash approximately once a minute in normal operation. If smoke is detected the unit will emit a loud pulsating alarm until the air is clear.

At normal time, the product is working under sleep mode. It will open the receiving window at a short time around every 16 seconds. In order to awake it and set it at transmission mode, the simplest way is to press the test button on top of the smoke detector. It will continually transmit as long as the button is pressed.

To test two units' transmission and reception performances/parameters, it is important to set them with the same code. The dip switch for setting the code is available on the base of the unit. When one is at its receiving mode, it can receive a triggering signal from the transmitting unit within 16 seconds. As soon as the receiving unit gets the signal, it will activate the alarm to sound loudly until the transmitting signal is vanished.

TESTING YOUR SMOKE ALARM

It is recommended that you test your smoke alarm once a week to ensure the detector is working correctly. Push and hold the test button for approximately 3 seconds. A loud pulsating alarm should sound to indicate the correct function. During the alarm condition the indicator light will flash quickly

After installation and after reoccupation of the dwelling following a vacation etc, check all your alarms. To test all connected smoke alarms - push and hold test button for up to 20 seconds until all alarms are activated.

COMMON CAUSES AND AVOIDANCE OF FALSE ALARMS:

The Smoke Alarm may be triggered by steam, condensation, normal smoke or fumes. Small insects getting into the smoke

alarm chamber may cause intermittent alarms. Keep away from the sources to avoid nuisance alarms. (See „Areas to be avoided“ in the „Positioning the smoke alarm“ section.)

HUSH OR SILENCE FEATURE

This Smoke Alarm has a built-in Hush or Silence feature incorporated into the test button. If cooking or other non-hazardous sources cause the unwanted alarm, it can be temporarily silenced by depressing the test button and holding for approximately 3 seconds. The alarm will enter a dormant period for 10 minutes. The red LED will flash every 10 seconds to indicate the sensitivity is reduced. At the end of the hush period the alarm will reset to normal sensitivity. NOTE - If the smoke density increases during this period (i.e. from a fire) the unit will go into alarm mode.

LOW BATTERY WARNING

If the smoke detector emits a short 'beep' once a minute the battery is at the end of its life and should be replaced immediately. This low voltage warning will be given for at least 30 days.

In this case, the other interconnected units in the system which are not in low battery condition will chirps for a few seconds once a hour as long as the detector with the "dead" battery beeps.

If the red indicator light (LED) does not flash every minute then replace the battery.

BATTERY REPLACEMENT:

- This smoke alarm requires 1 piece 9V battery (alkaline or lithium). Normally, its average service life is 12 months for alkaline type, longer for lithium types.
- Replace the batteries immediately once the smoke alarm start beeping (the low battery warning)
- Remove the battery by gently pulling it away from the connection pad.
- Insert 9V battery firmly into battery compartment. NOTE POLARITY OF CONNECTIONS. Ensure the battery is connected firmly.
- Re-attach the upper smoke alarm unit to the mounting base.
- Test the alarm for correct operation using the test facility, when ever the battery is replaced.

CAUTION: Danger of explosion if battery is incorrectly replaced. Replace only with the same or equivalent type. The

Item no.: 27480
Barcode: 5703901017874

L-Team ApS
Industrivej 20
5492 Vissenbjerg
Danmark



use of batteries other than those recommended on the back of the smoke alarm may be detrimental to its operation.

MAINTAINING YOUR SMOKE ALARM:

Clean your smoke alarm regularly to prevent dust build up. This can be done using a vacuum cleaner with the brush attachment. Clean gently around the front grilled section and sides. Never use water, cleaners or solvents since they may damage the smoke alarm.

CONFORMATIES:

CE 1622 MTS-166RF
 0086-CPR-638573 LPS NO. 20161
 EN 14604:2005/AC:2008 SMOKE ALARM DEVICES
 BS - R&TTE - LICENSE NO KM 638574
 DoP no. L-TEAM-MTS-166RF-0086-CPR-638573
 Find the complete DoP (Declaration of Performance)
 at www.ensonordic.com.

Declared performance:

Essential characteristics	Performance	Harmonized technical specification
		EN 14604:2005/AC:2008
Nominal activation conditions/ Sensitivity, Response delay (response time) and Performance under fire condition	PASS	4.12, 4.18, 5.2, 5.3, 5.4, 5.5, 5.6, 5.15, 5.17, 5.18, 5.19, 5.20
Operational reliability	PASS	4.1, 4.2, 4.3, 4.4, 4.5, 4.6, 4.7, 4.8, 4.9, 4.10, 4.11, 4.13, 4.14, 4.15, 4.16, 4.17, 4.19, 5.11, 5.16, 5.22, 5.23, 5.24
Tolerance to supply voltage	PASS	5.21
Durability of operational reliability and response delay, Temperature resistance	PASS	5.7, 5.8
Durability of operational reliability, vibration resistance	PASS	5.12, 5.13
Durability of operational reliability, humidity resistance	PASS	5.9
Durability of operational reliability, corrosion resistance	PASS	5.10
Durability of operational reliability, electrical stability	PASS	5.14

Notes: The products covered by this standard are assumed to operate, in an event of fire, before the fire becomes so large as to affect their functioning. There is therefore no requirement to function when exposed to direct attack from fire.

RECYCLING:

Electrical and electronic equipment contains materials, components and substances that may be harmful to human health and the environment if the waste is not handled cor-

rectly. Electrical and electronic equipment is marked with the crossed-out bin below.

This symbolizes that electrical and electronic equipment must not be disposed of with unsorted household waste, but must be collected separately. Contact the local recycling centre and follow their instructions.



TECHNICAL DATA :

Type of assembly: Ceiling
 Battery: 9V Alkaline (duracell MN1604, Energizer 522, Gold Peak GP1604A recommended) 9v Lithium (ultra-life U9VL-J, Gold peak CR-V9, EVE CR9V/P)
 Battery life: Up to 1 years - regular use
 Frequency: 868,4MHz
 Range: Up to 100 meters
 Transmission: 50 Kbps
 Max. wireless interconnection / system: 20 units *
 Code settings: 16
 Operating temperature: 0°C – 40°C
 Ambient humidity: 10% - 90%
 Steady current: < 20uA
 Alarm current: < 50mA
 Sound power: 85dB at 3 meter
 Guarantee: 2 years - NO battery-guarantee

* Combine both 9V and 230V Smoke Alarm in the same system. Item no.: 27480, 10102, 10103, 18101 and 18103.

The product is covered by a 2-year warranty from the date of purchase. The warranty is only valid on presentation of an original purchase receipt.

The warranty covers repair of the product during the warranty period, provided the product has been used and maintained as described in the manual. All replaced parts belong to L-Team. Replacement and repair do not extend the warranty period. The warranty lapses upon modification or attempted repair of the product. The warranty does not cover freight costs and force majeure, such as accidental power outage.

01.12.2019

Item no.: 27480
 Barcode: 5703901017874

L-Team ApS
 Industrivej 20
 5492 Vissenbjerg
 Danmark